

Layer 1 - Canopy / Tall Trees (30ft +)

- (N100: AM-BW) American Black Walnut - *Juglone Producing*
- (N200: N-BL) Native Black Locust - *Already Site Present*
- (11: SL-M) Shangri La Mulberry - *Juglone Blocking*

Layer 2 - Sub Canopy / Large Shrub (10ft +)

- (22: DW-AP) Dwarf Apple Enterprise - *Rust-Free and Short*
- (23: WF-PE) Wasi Fuji Persimmon - *Short + Tasty*
- (24: L-AP) Liberty Apple - *Rust-Free*
- (25: WP-AP) William's Pride Apple - *Rust-Free*
- (26: AB-AP) Arkansas Black Apple - *Rust-Free*
- (27: SW-SC) Sweetheart Sweet Cherry - *Tasty*
- (28: ??-PE) Peach- *Tasty*

Layer 3 - Shrub

- (32: AM-E) American Elderberry - *Juglone Tolerant*
- (33: SEA) Seaberry (Buckthorn) - *Juglone Tolerant / N-Fixing*
- (34: ??-CU) Black Currants - *Tasty*
- (35: ??-SB) Serviceberry - *Tasty*
- (36: ??-JB) Jostaberry - *Tasty*
- (37: IND) Indigobush - *N-Fixing*

Layer 4 - Herbaceous

- (41: COM) Blocking 14 Comfrey - *Chop & Drop*
- (42: MMint) Mountain Mint - *Chop & Drop*
- (42: BB) Bee Balm - *Chop & Drop*
- (43: HVET) Hairy Vetch - *Chop & Drop*
- (44: WCLO) White Clover - *Chop & Drop*

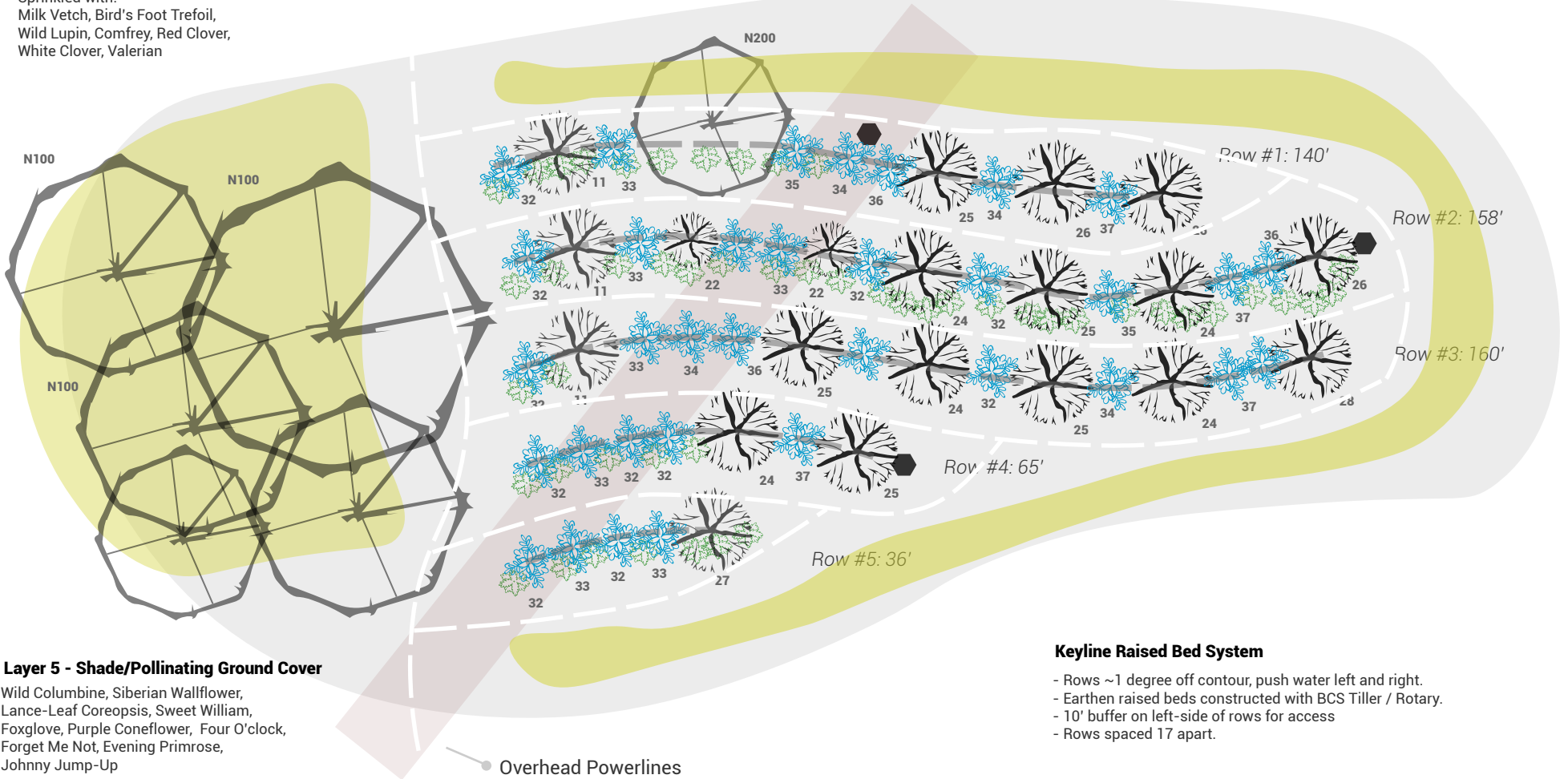
Sprinkled with:
Milk Vetch, Bird's Foot Trefoil,
Wild Lupin, Comfrey, Red Clover,
White Clover, Valerian

Layer 5 - Root

Sprinkling with:
Turnips

Layer 5 - Pollinating Ground Cover

Standard: Milk Vetch, Bird's Foot Trefoil, Wild Lupin, Comfrey, Red Clover, White Clover, Valerian
Native: Butterfly Weed, Purple Coneflower, Red Standing Cypress, Blazing Star, Wild Lupine, and even Scarlet Sage and Spiderwort
Pollinating: New England Aster, Siberian Wallflower, Lance-Leaf Coreopsis, Indian Blanket, Four O'Clock, Sweet Alyssum, Scarlet Sage



Layer 5 - Shade/Pollinating Ground Cover

- Wild Columbine, Siberian Wallflower,
Lance-Leaf Coreopsis, Sweet William,
Foxglove, Purple Coneflower, Four O'clock,
Forget Me Not, Evening Primrose,
Johnny Jump-Up

Keyline Raised Bed System

- Rows ~1 degree off contour, push water left and right.
- Earthen raised beds constructed with BCS Tiller / Rotary.
- 10' buffer on left-side of rows for access
- Rows spaced 17' apart.



Pollinator Hotel or Bird House 1 Ground Cover Bush/Herb 1 Berry Bush 10' Canopy Fruit Tree 15' Canopy Fruit Tree

